

Manual Opening (with winder)

Product Information

- Thermally Broken Aluminium
- 4 x 35mm Polyamide inserts
- Triple Seal Gasket System
- Solar Control Self-Cleaning Glass included as a standard
- Double Glazed
- 300mm Opening
- Chrome winder with 2m extension pole
- Maximum size 1200 x 1200mm with a single winder
- Tandem winder also available in larger applications

Testing

- Weathertightness in accordance with BS 6375-1:2015
- Air Permeability test in accordance with BS EN 1026:2000
- Watertightness test in accordance with BS EN 1027:2000
- Resistance to wind load in accordance with BS EN 12211:2000

Lead time

Standard Specification: 14-16 working days
Heat Soaking: 3-4 weeks
Toughened Laminate: 4 weeks

Installation

To ensure a better weathertightness, there are no external fixings on our Manual Opening Rooflight.

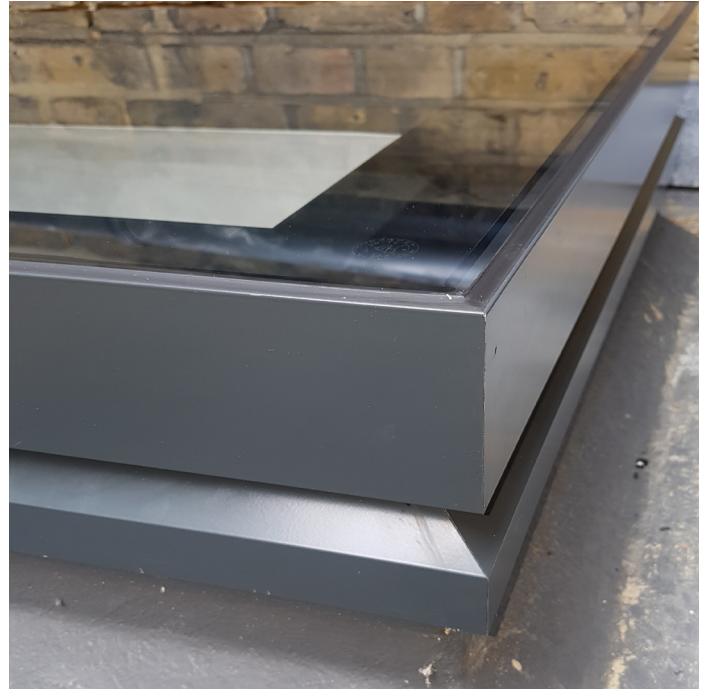
Minimum pitch: 5 degrees
Maximum pitch: 15 degrees

Full fitting guides will be supplied with every Rooflight and are also available to download from our website.

Warranty

Our Rooflights are guaranteed for 5 year parts only in accordance to our terms and conditions.

Both warranty certificate and our terms & conditions are available to download from our website.



Colours

Standard Colours:

Slate Grey RAL 7015m
Anthracite Grey RAL 7016m
Jet Black RAL 9005m

Dual colour (white internal) also available for an additional charge.

Bespoke RAL colour also available for an additional charge.

Request a Quote:

Internal Kerb Size:

and/or

External Kerb Size:

Colour:

Fully Bonded or, Manufactured Frame Only

Notes:

For more information on our range contact our team on
01420 520 580 or visit our website www.firstglassroofs.com

